



Description

Soundproof ventilating boxes, for ventilation or air extraction systems.

Characteristics

Material: Galvanized steel sheet structure with thermal and acoustic insulation

Fan: In galvanized steel, impeller with forward blades, directly coupled closed motor, integrated thermal protection, class Fe protection degree IP54.

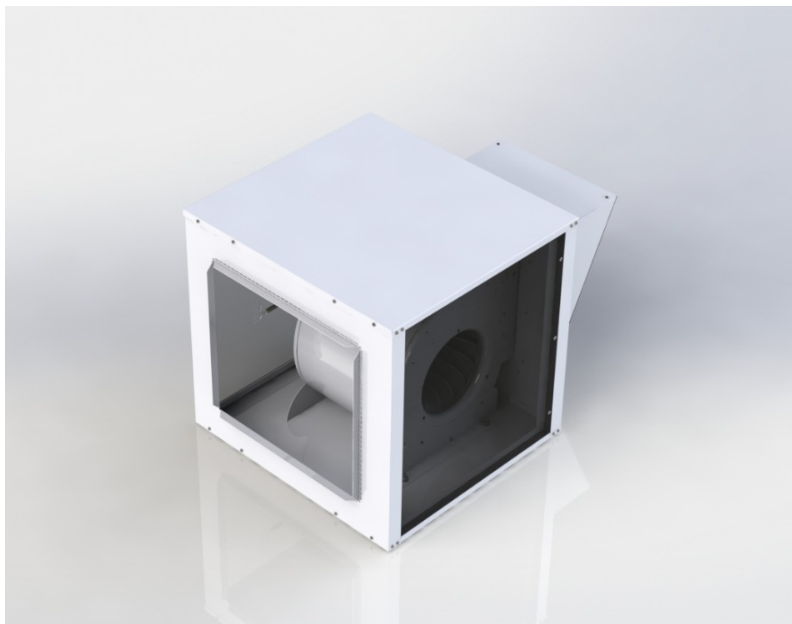
Maximum temperature of the air to be moved:
-20°C +60°C

Finish: Anti-corrosion galvanized steel sheet.

use

Suction or introduction of clean or slightly dusty air.

Flow rates from 650 a 6000 m³/h and static pressures up to 500 Pa.





TYPE: BOX DD 7—7 III

Motor : 150W—4 P

Temp : -10 C — + 40 C

Volt : 220 V

Amp : 1,4 A

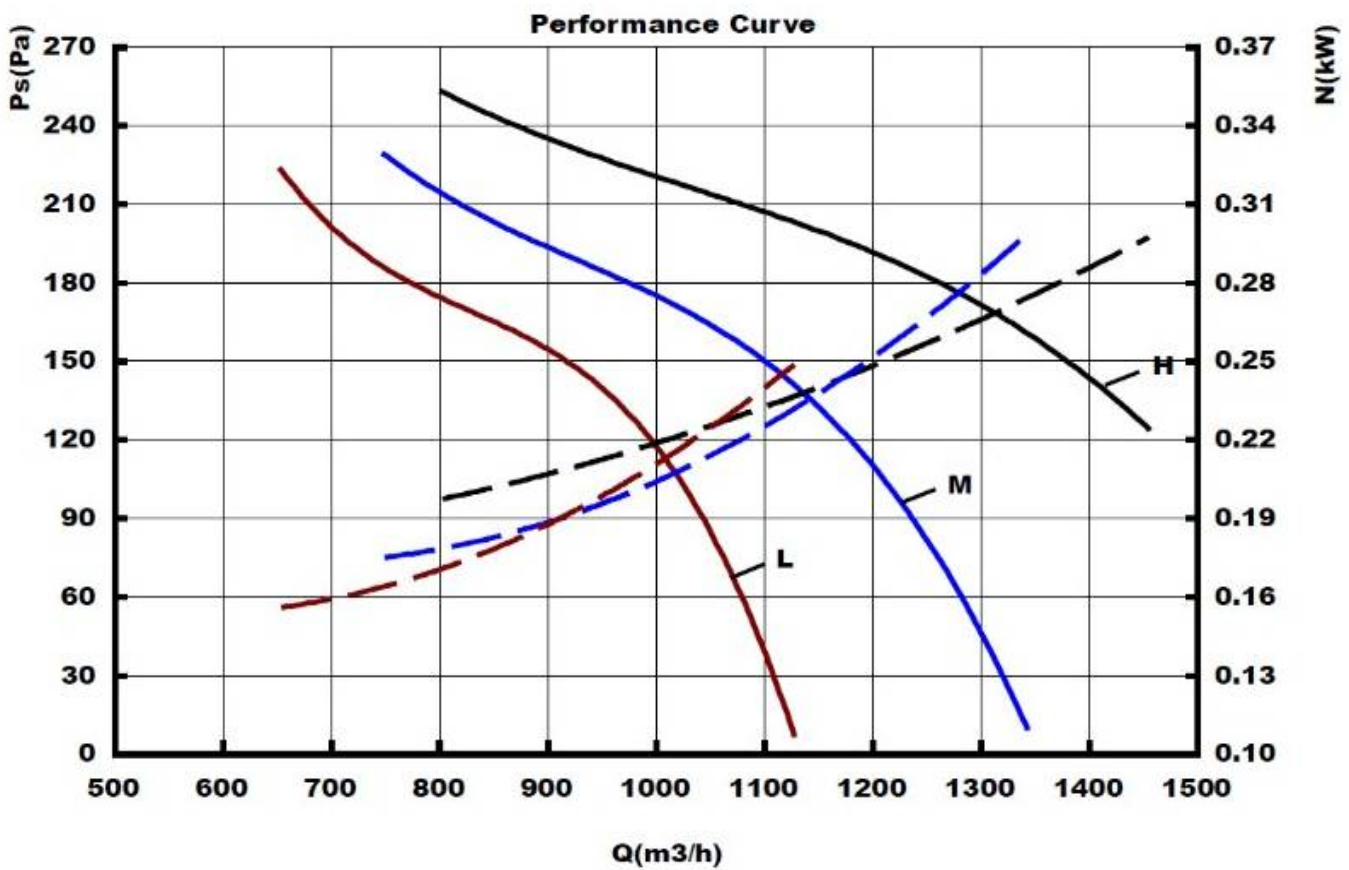
Prot: IP 20

Fre : 50 Hz

Cap : 5 mF/ 450 V

Ins Cl : B

Performance Parameter(1.2Kg/m³)





TYPE: BOX DD 9—7 III

Motor : 375W—4 P

Temp : -10 C — + 40 C

Volt : 220 V

Amp : 4 A

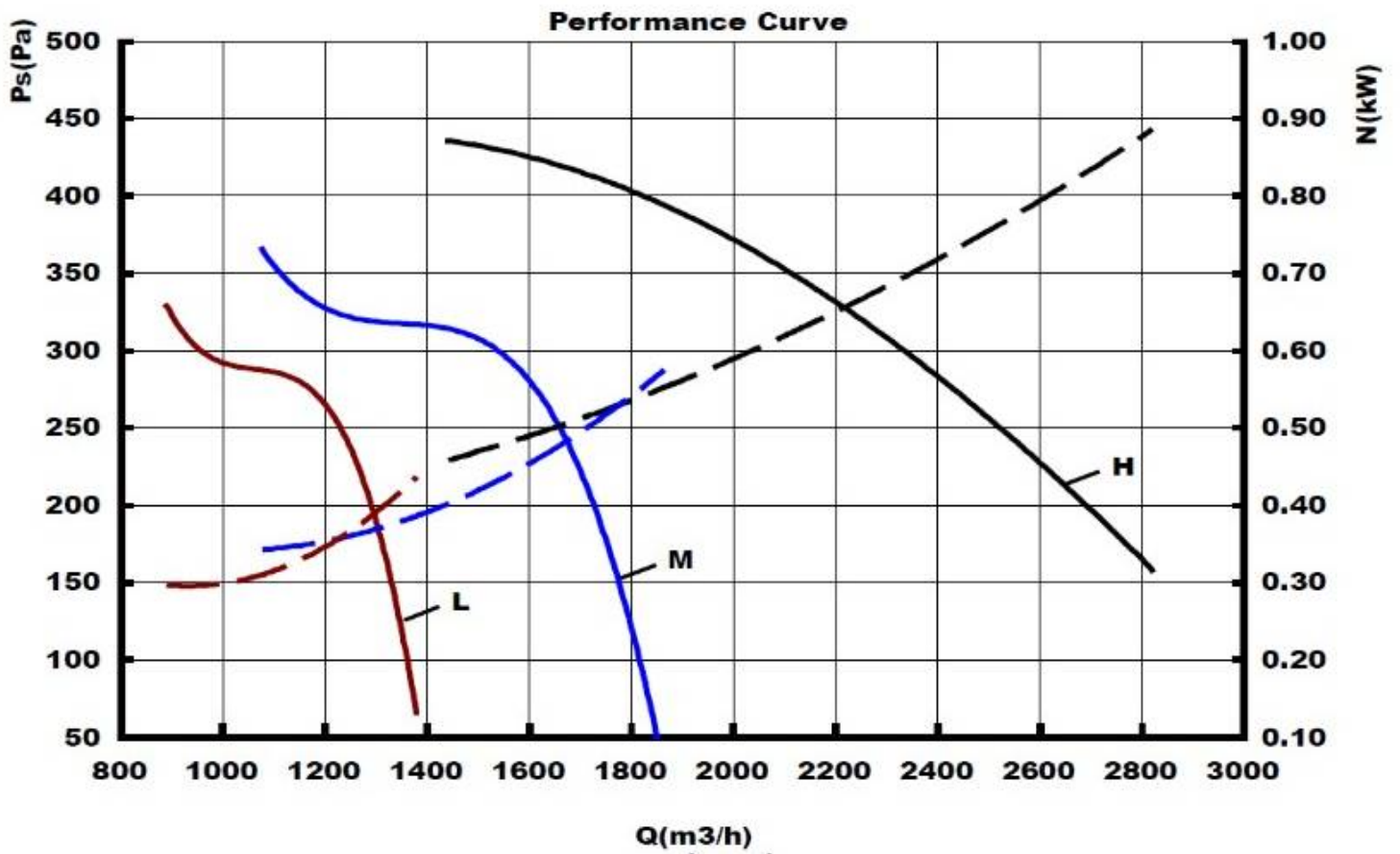
Prot: IP 20

Fre : 50 Hz

Cap : 10 mF/ 450 V

Ins Cl : B

Performance Parameter(1.2Kg/m³)





TermoFan
Air Conditioning Systems

BOX DD 9 - 9 III - 450W - 4P

TYPE: BOX DD 9—9 III

Motor : 450W—4 P

Temp : -10 C — + 40 C

Volt : 220 V

Amp : 5 A

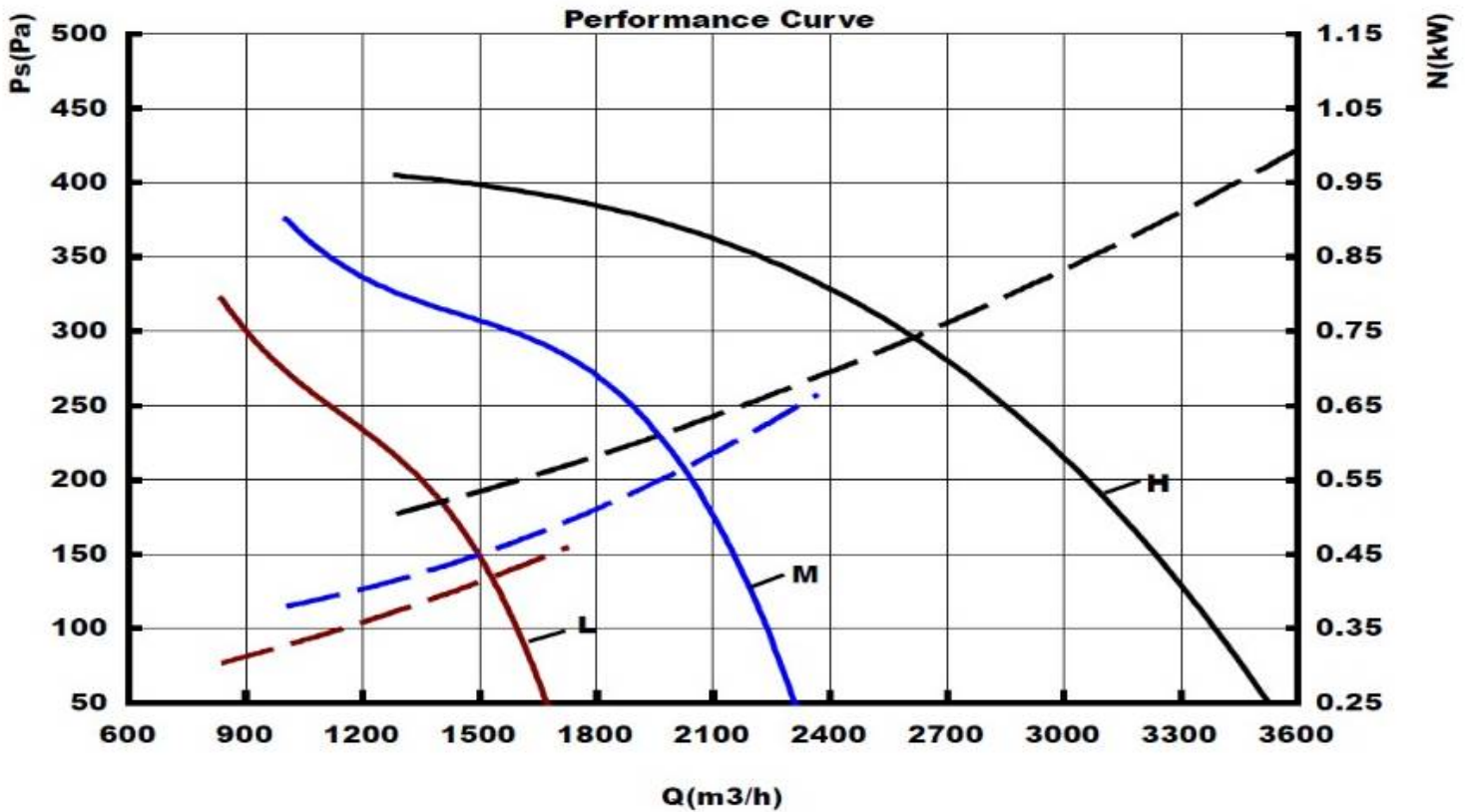
Prot: IP 20

Fre : 50 Hz

Cap : 15 mF/ 450 V

Ins Cl : B

Performance Parameter(1.2Kg/m³)





TermoFan
Air Conditioning Systems

BOX DD 10 - 10 I - 550W - 4P

TYPE: BOX DD 10—10 I

Motor : 550W—4 P

Temp : -10 C — + 40 C

Volt : 220 V

Amp : 4,9 A

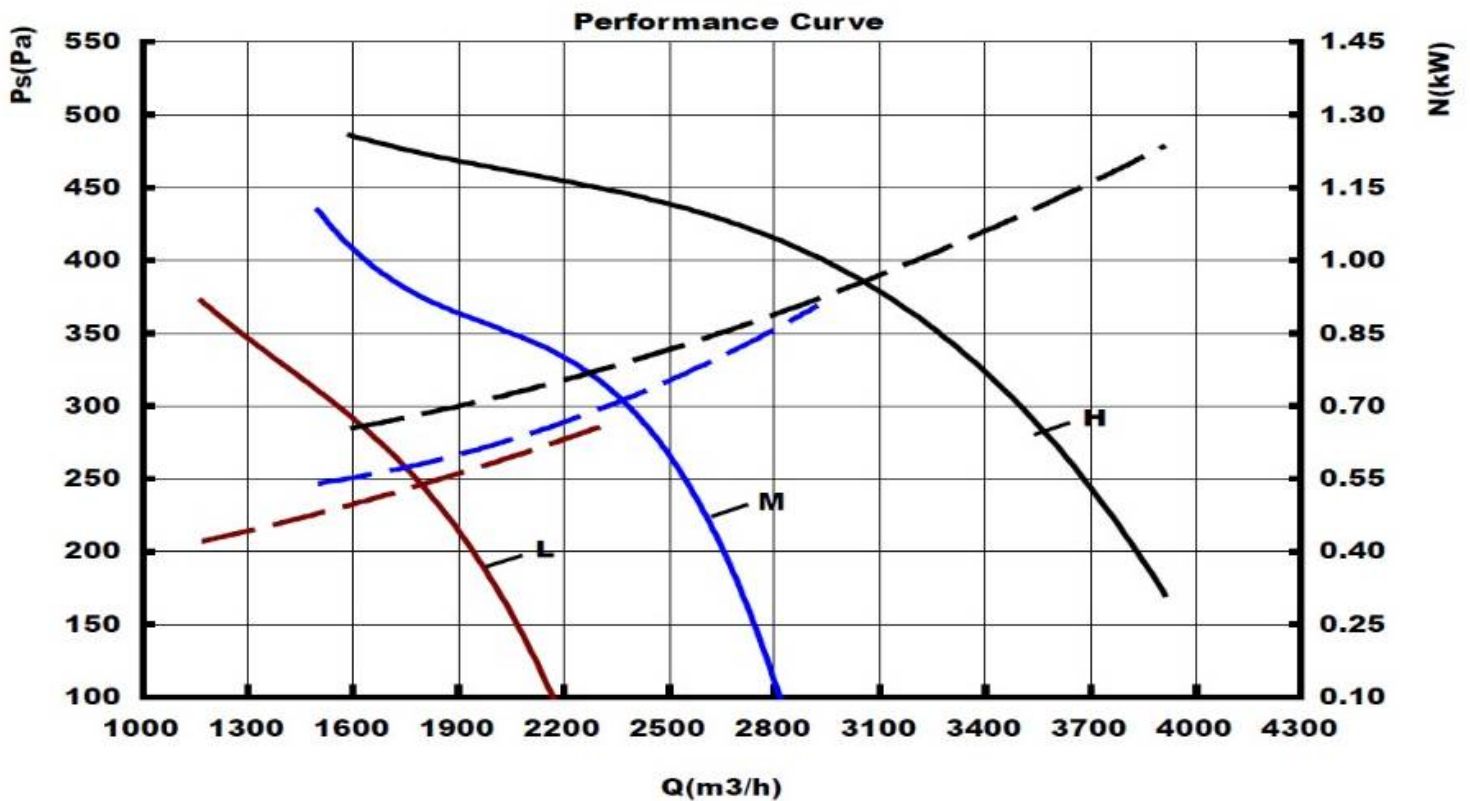
Prot: IP 20

Fre : 50 Hz

Cap : 18 mF/ 450 V

Ins Cl : B

Performance Parameter(1.2Kg/m³)





TYPE: BOX DD 12—12 I

Motor : 750W—6 P

Temp : -10 C — + 40 C

Volt : 220 V

Amp : 5,9 A

Prot: IP 20

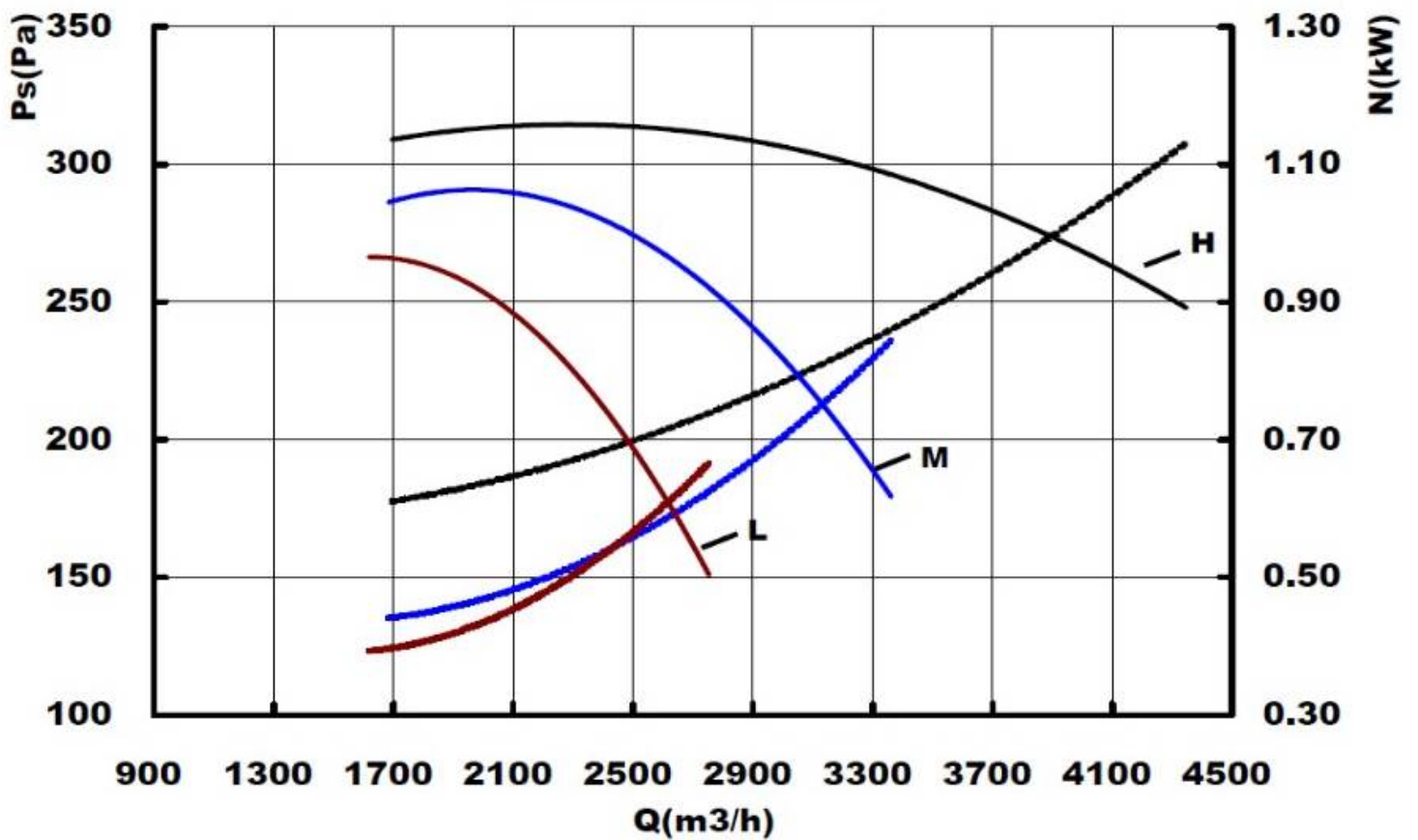
Fre : 50 Hz

Cap : 18 mF/ 450 V

Ins Cl : B

Performance Parameter(1.2Kg/m³)

Performance Curve





TermoFan
Air Conditioning Systems

BOX DD 12 - 12 I - 1270W - 6P

TYPE: BOX DD 12—12 I

Motor : 1270W—6 P

Temp : -10 C — + 40 C

Volt : 220 V

Amp : 7,7 A

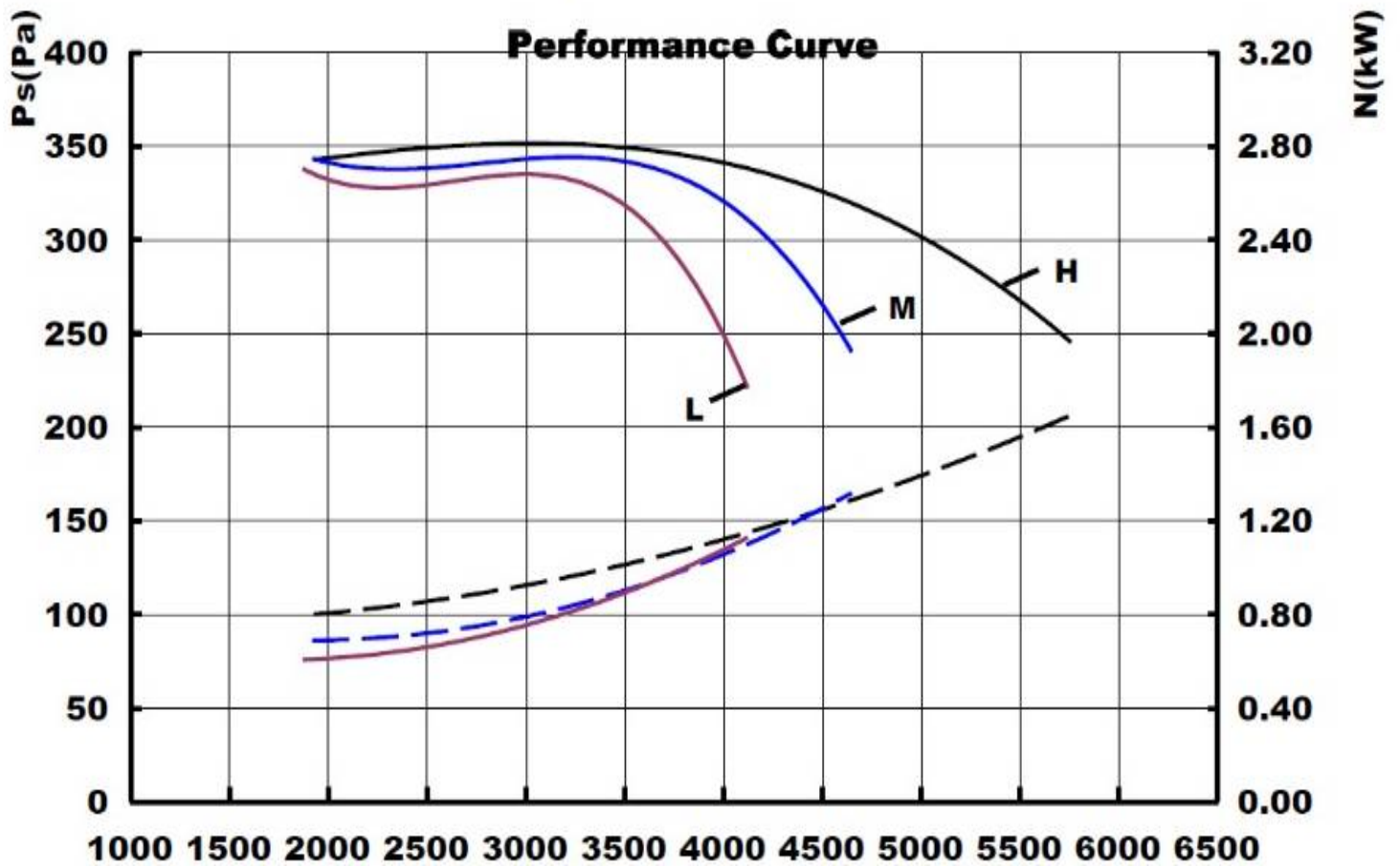
Prot: IP 20

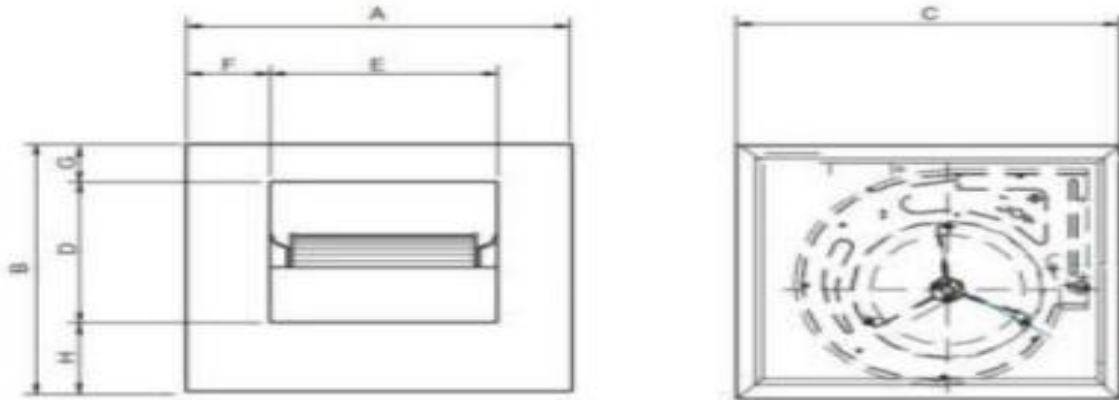
Fre : 50 Hz

Cap : 30 mF/ 450 V

Ins Cl : B

Performance Parameter(1.2Kg/m³)





Model	A (mm)	B (mm)	C (mm)	D (mm)	E (mm)	H (mm)
BOX DD 7-7 III 150W-4P	450	450	450	210	232	146
BOX DD 7-9 III 375W-4P	550	550	550	282	232	177
BOX DD 9-9 III 450W-4P	535	535	535	300	282	177
BOX DD 10-10 III 550W-4P	580	580	580	331	291	200
BOX DD 12 - 12 III - 750W - 6P	650	650	650	395	341	232
BOX DD 12 - 12 III- 1270W - 4P	650	650	650	341	241	232